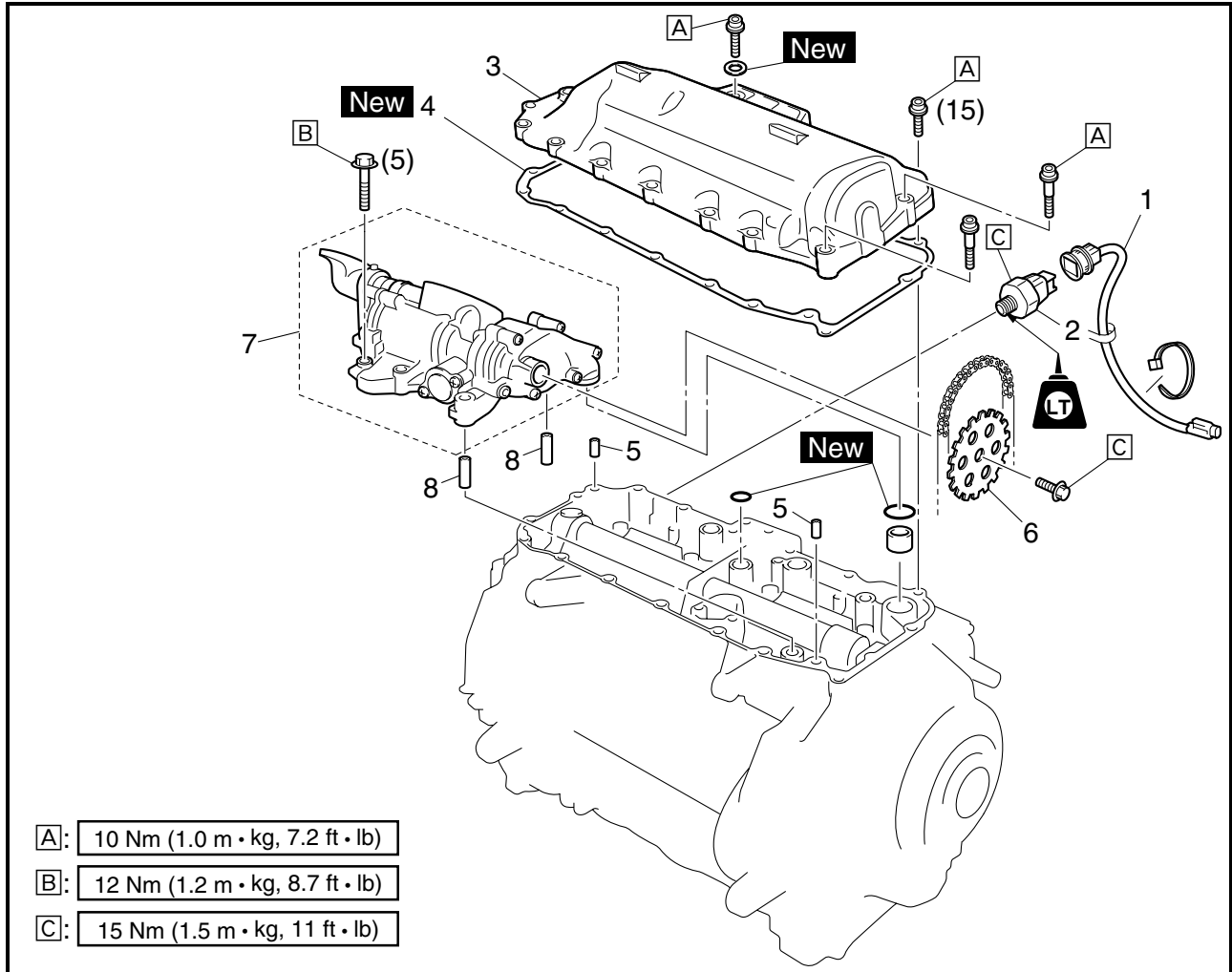




OIL PAN AND OIL PUMP



- A: 10 Nm (1.0 m • kg, 7.2 ft • lb)
- B: 12 Nm (1.2 m • kg, 8.7 ft • lb)
- C: 15 Nm (1.5 m • kg, 11 ft • lb)

Order	Job name/Part name	Q'ty	Remarks
	<b>Oil pan and oil pump removal</b>		Remove the parts in the order listed below. Refer to "ENGINE ASSEMBLY".  For installation, reverse the removal procedure.
	Engine		
1	Oil pressure switch sub-lead	1	
2	Oil pressure switch	1	
3	Oil pan	1	
4	Oil pan gasket	1	
5	Dowel pin	2	
6	Oil pump driven gear	1	
7	Oil pump assembly	1	
8	Dowel pin	2	