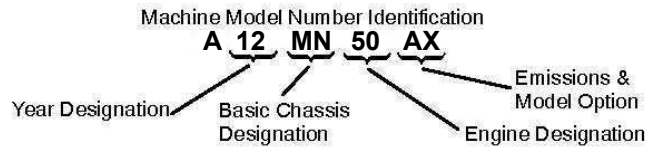


GENERAL INFORMATION

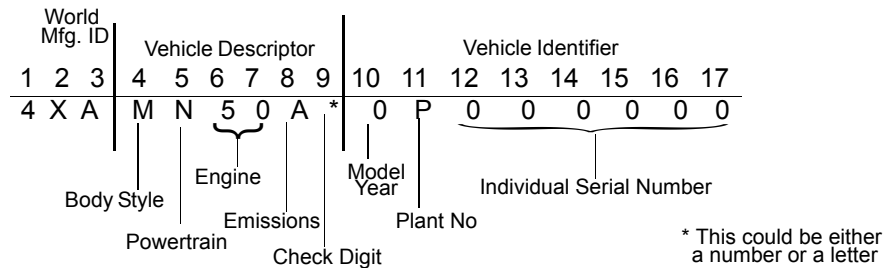
MODEL NUMBER INFORMATION

Model Number

The machine model number must be used with any correspondence regarding warranty or service.



Vehicle Identification Number (VIN)



Engine Designation Numbers

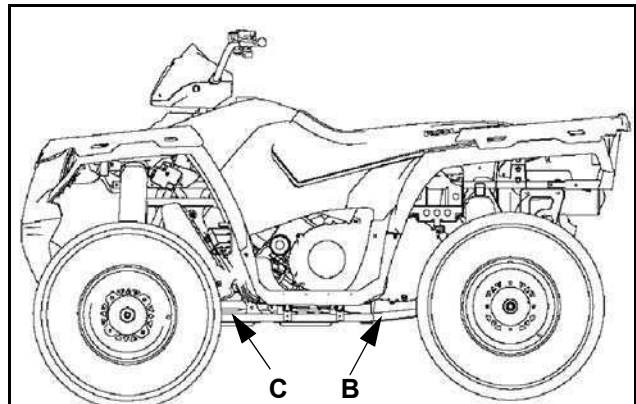
EH50PLE - Single Cylinder, Liquid Cooled, 4 Stroke, Electric Start

EH46PLE - Single Cylinder, Liquid Cooled, 4 Stroke, Electric Start

The vehicle serial number is located:

400 / 500 Non Touring Vehicles (B)

500 Touring Vehicles (C)



Vehicle and Engine Serial Numbers

The machine model number and serial number are important for vehicle identification. Be sure to refer to the engine model number and serial number (A) whenever corresponding about an engine. This information can be found on the sticker applied to the top side of the crankcase (A). An additional number is stamped on the side of the crankcase beneath the cylinder coolant elbow.

